



# PRE PRESS SPECIFICATIONS (Print & offset)

## HOW TO PREPARE FILES FOR PRINTING

- For your own comfort – please proof read all cover text twice and check for typos etc. (after you have confirmed the digital proof, a file change will involve an additional fee to cover the cost of a new exposure).
- **Use PDF file format v. 1.3.**
- **Do not embed ICC profiles.**
- **Make sure your artwork fits the correct template** (use the templates available on our website. If you need other options, please contact us).
- **Delete template layers, leave artwork and cropmarks only** (tip: Set document size to the match the measures on the template).
- Make sure pages have the correct orientation – that they are not upside down.
- That booklets have the correct page order (or the files that you provide are properly numbered).
- **Add 3mm - 5mm bleeds around artwork (depending on template).**
- **All fonts/typefaces must be outlined/converted to curves to avoid font changes.**
- **Flatten transparencies.**
- **Make sure bitmaps are 300dpi.**
  
- **Use CMYK color mode.** If you are using Pantone colors, please note the numbers used.
- **Make sure black barcodes and QR codes are in 100%K only.**
- **Total ink amount (CMYK) up to 300% on coated paper, 260% on reverse board.** Covers are printed using offset technique or as digital print.  
Our printers apply their own ICC profiles, matching the ISO standards ISO COATED V2 300 and ISO UNCOATED. Do not embed the ICC profile in the final PDF file.
- **Pure black areas (backgrounds etc.) can be defined as 60%C 60%M 60%Y 60%K for a deeper black color.**
- Minimal ink amount is 6% – values below won't be visible in print.
- Typefaces should generally be larger than 6 point (below that size we can't guarantee that the printed letters will look sharp, especially when the type is thin or light ).
- Make sure letters and objects (especially dots, thin lines etc.) are big and thick enough to be printed correctly.
- Be aware of the contrast between dark elements when printed with ink – the fact that you can see the difference on the screen, does not mean that it will be visible in print.
- As a default, images on screen will always appear brighter than in print (a monitor is lighted, paper only reflects light). Please adjust your monitor to a correctly printed file, if you need a closer match.
- Finishing may change the colors slightly.
- If you want to be 100% sure about matching the colors, please send us a print proof (made on a professionally calibrated proof printer).
  
- **Special print note:** Matt foil lowers the contrast, glossy foil makes color look darker.
- **Special print note:** Hotstamping/embossing/spot uv should be in vectors on separate page of the pdf file, marked as additional color or 100%K.
- **Special print note:** Line in hotstamping should be minimum 0,3 mm thick.

## WHAT WE CHECK:

- File type (pdf).
- Color mode (CMYK).
- If the design fits the correct template (that the spine is in the correct place, if the file has the relevant bleeds etc.).
- That bar codes and QR codes are in 100% K.
- Total ink amount (300%).
- Resolution of tbitmaps in the print file (300 dpi).
- If hotstamping/embossing/uv is suitable for printing.

## WHAT WE DON'T CHECK:

We do not check the content (e.g. typos, correct language usage etc.), or if the artwork has the correct colors, is too dark or light etc. Please proof read all text and check other content carefully before submitting your artwork.

**We are not responsible for content related errors – we only check if the file is correct in terms of TECHNICAL ISSUES (whether the file is suitable for printing).**

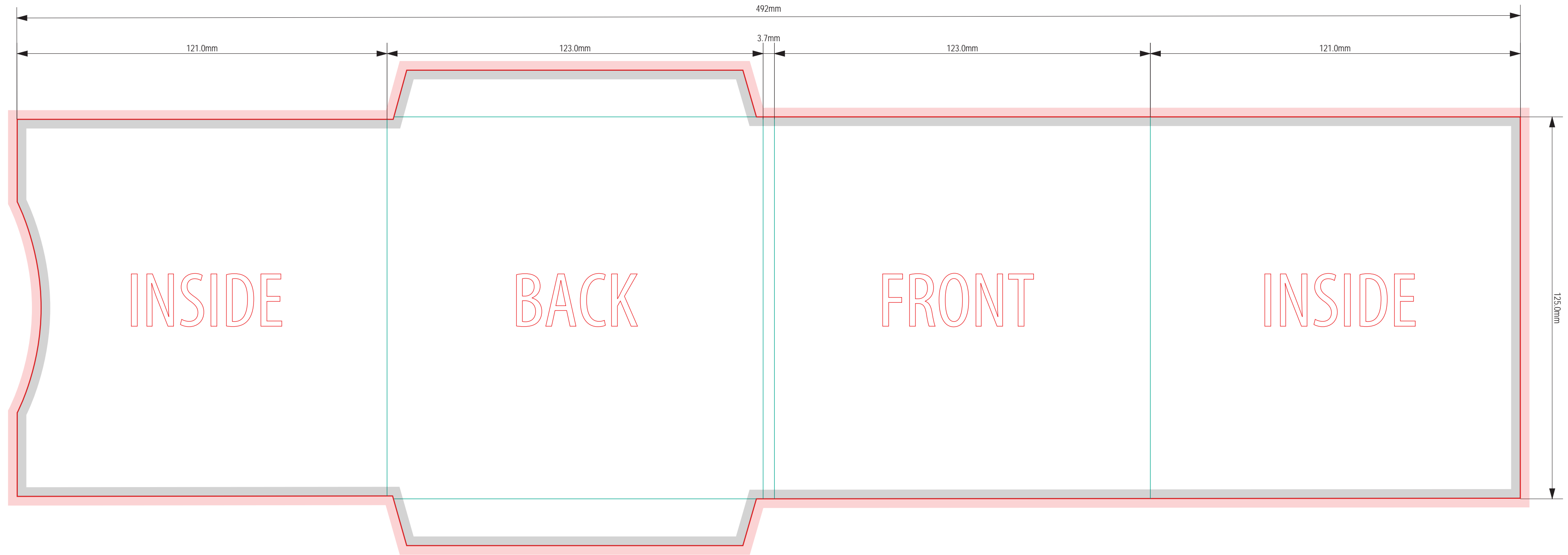
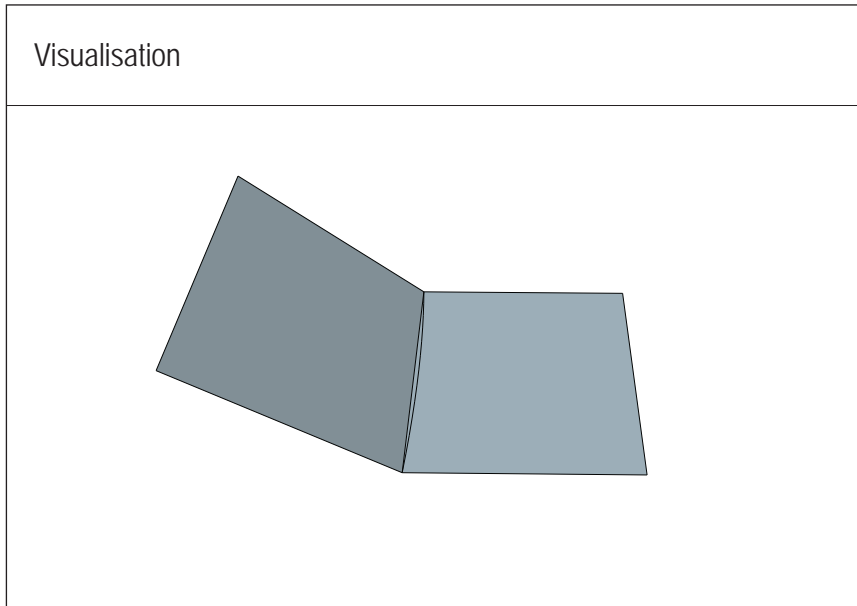


Cutting line	
Folding line	
Perforation line	
carton weight: 300 gsm	

	Bleed (3 mm)
	Tolerance field (3 mm)

**CARD WALLET**  
**K04**

Drawing	K04 (123/125) spine 3.7		
Scale	1/1	Method of Projection	AI (CC) / PDF
Date	17/02/2018		



## CD & DVD ONBODY PRINTINGS REQUIREMENTS

### Printing area

between diameters 22 i 117 mm or between diameters 35mm i 117mm

### Colours

CMYK  
Pantone

**Please note!**

We do not print from RGB files

### Fonts

min. size 4,5pkt (for counter font 6pkt)

### File format

PDF (max. ver. 10) (preferred)  
CDR (max ver. 12)  
EPS, AI, PSD (max ver. CS3)

**Please note!**

Please convert all fonts into curves

### Printing methods requirements

silkscreen (110 lpi)  
max 4 colors (Pantone albo CMYK) + white base  
offset (175lpi)  
max. 5 colours (CMYK +1 Pantone) + white base

### **Please note!**

The best quality of silkscreen overprint is obtained with 100% colour saturation, however because of limited possibilities of continuous-tone image, the saturation used should be in the range between 15% and 85%.

